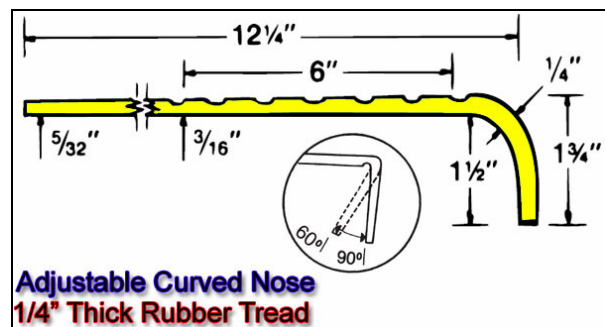
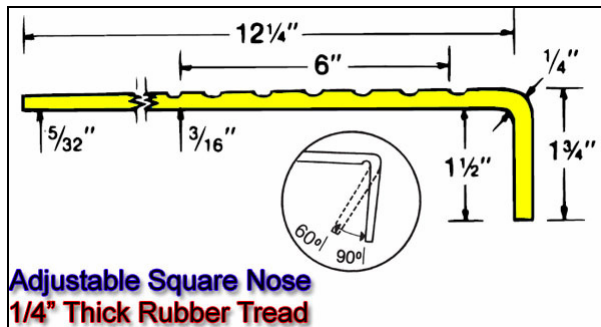
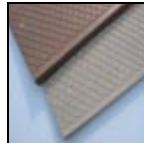


AMERICAN[®] STAIR TREADS

152 Rollins Avenue #102
Rockville, MD 20852
800-762-9010
240-780-3309 (fax)
<http://www.americanstairtreads.com>

Diamondtread Stair Treads



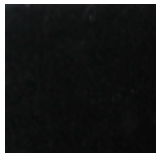
Deep diamond groove pattern combines beauty and durability by allowing dirt and debris particles to fall beneath the tread, which increases traction and minimizes wear.

- Adjustable square or curved nosing, which allows fit on stairways designed for safety and aesthetics.
- Extra thick front edge tapers to smooth rear border, makes cleaning easier.
- Perfect for use in office buildings, hospitals, schools, department stores, shopping malls, etc.
- Easily clean surface with broom or damp mop.
- Matching 7" Cove Risers (1/8" thick) are available.
- 1/4" overall thickness with a 12-1/4" depth.
- Federal Specs: ZZ-T-001237-GSA-FSS and RR-T-650 Type A Type II.

Item No: STAT

Standard Sizes (Approximate)				
Size	Qty. 1-25	Qty. 26-50	Qty. 51-100	Qty. 101-250
36" Width	\$53.00	\$50.00	\$47.00	\$45.00
42" Width	\$61.00	\$58.00	\$55.00	\$53.00
48" Width	\$69.00	\$66.00	\$63.00	\$61.00
54" Width	\$77.00	\$74.00	\$71.00	\$69.00
60" Width	\$86.00	\$83.00	\$80.00	\$78.00
72" Width	\$102.00	\$99.00	\$96.00	\$94.00

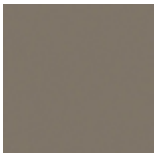
Solid Colors



Black



Slate Grey



Mid Grey



Light Grey



Dark Brown



Medium Brown



Beige



Burgundy

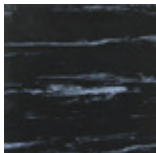


Dark Blue

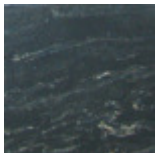


Dark Green

Multi-Tone Colors



Black Marble



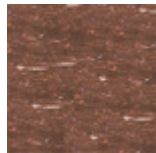
Slate Marble



Mid Grey Marble



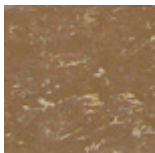
Grey Marble



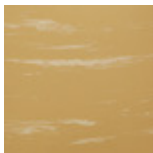
Mahogany Marble



Walnut Marble



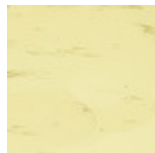
Oak Marble



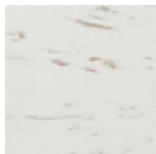
Birch Marble



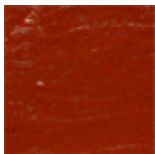
Peach Marble



Beige Marble



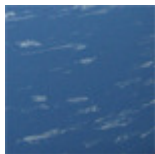
Oatmeal Marble



Red Marble



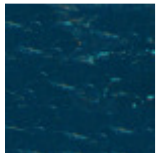
Maroon Marble



Blue Marble



Green Marble



Dark Teal Marble